

# MONTHLY MEMBERSHIP PROGRESS REPORT

District 24 C

Results as of: 3/31/2026

GMT:

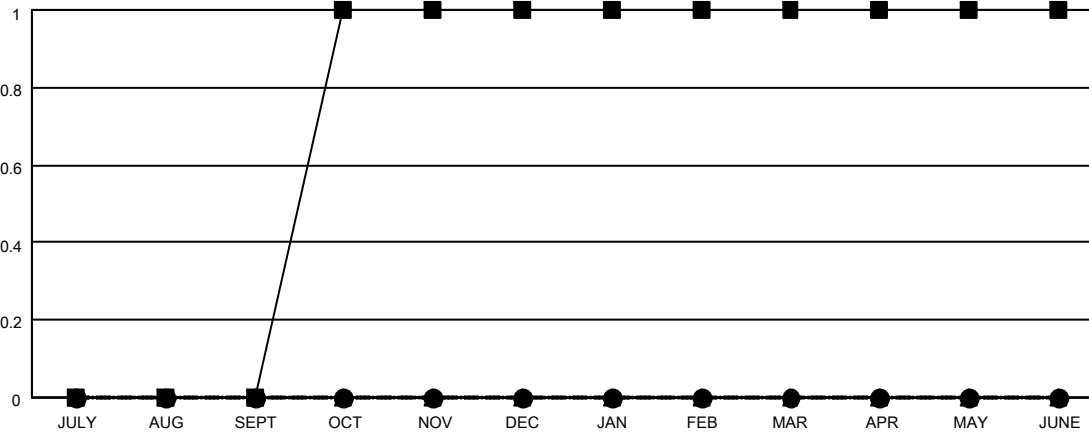
LOCATION VIRGINIA

GMT CA

Clubs			
RESULTS FOR 2025-2026			
QUARTER	NEW CLUB GOAL	NEW CLUBS	DROPPED CLUBS
JULY/AUG/SEPT	0	0	0
OCT/NOV/DEC	1	0	0
JAN/FEB/MAR	0	0	1
APR/MAY/JUNE	0	0	0

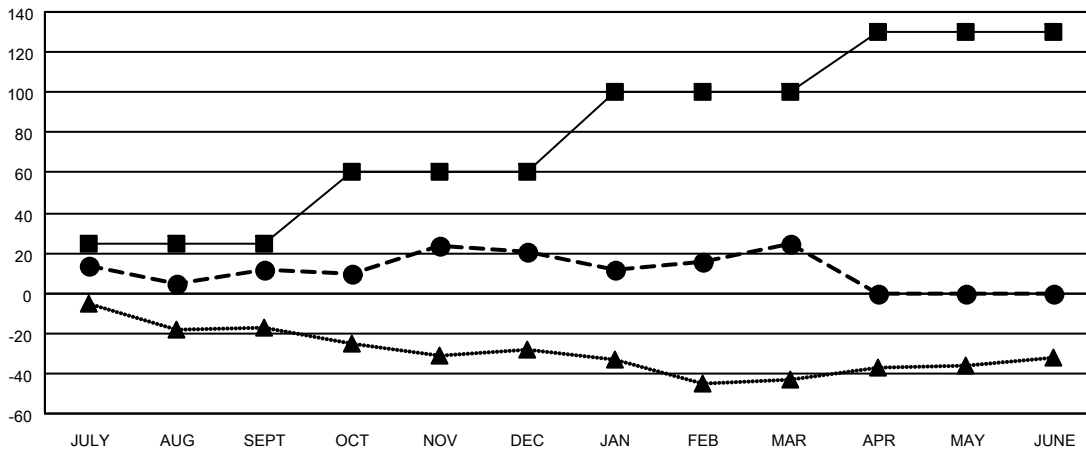
Members			
RESULTS FOR 2025-2026			
QUARTER	MEMBER GROWTH NET GOAL	MEMBER GROWTH ACTUAL	DROPPED MEMBERS ACTUAL (including transfers)
JULY/AUG/SEPT	25	38	24
OCT/NOV/DEC	35	46	34
JAN/FEB/MAR	40	56	47
APR/MAY/JUNE	30	0	0

GOALS AND ACTUAL NEW CLUBS CUMULATIVE



- - CURRENT YEAR GOALS FOR NEW CLUBS
- - CURRENT YEAR ACTUAL NEW CLUBS
- ▲ - LAST YEAR ACTUAL NEW CLUBS

GOALS AND ACTUAL MEMBERS CUMULATIVE



- - MEMBER GROWTH NET GOAL
- - MEMBER GROWTH ACTUAL
- ▲ - LAST YEAR MEMBERSHIP ACTUAL

DROPPED CLUBS: 1	
<b>DROPPED MEMBERS</b>	
DECEASED	21
CLUB CANCELLED	0
OTHER	83
<b>TOTAL</b>	<b>104</b>

31 CLUBS OF 50 ADDED 1 OR MORE NEW MEMBERS

GENDER DISTRIBUTION	
MALE	776 (60.72%)
FEMALE	501 (39.20%)

[CLICK HERE FOR CUMULATIVE MEMBERSHIP DATA](#)

TOTAL FAMILY UNIT MEMBERS	236
FAMILY MEMBERS PAYING HALF DUES	119